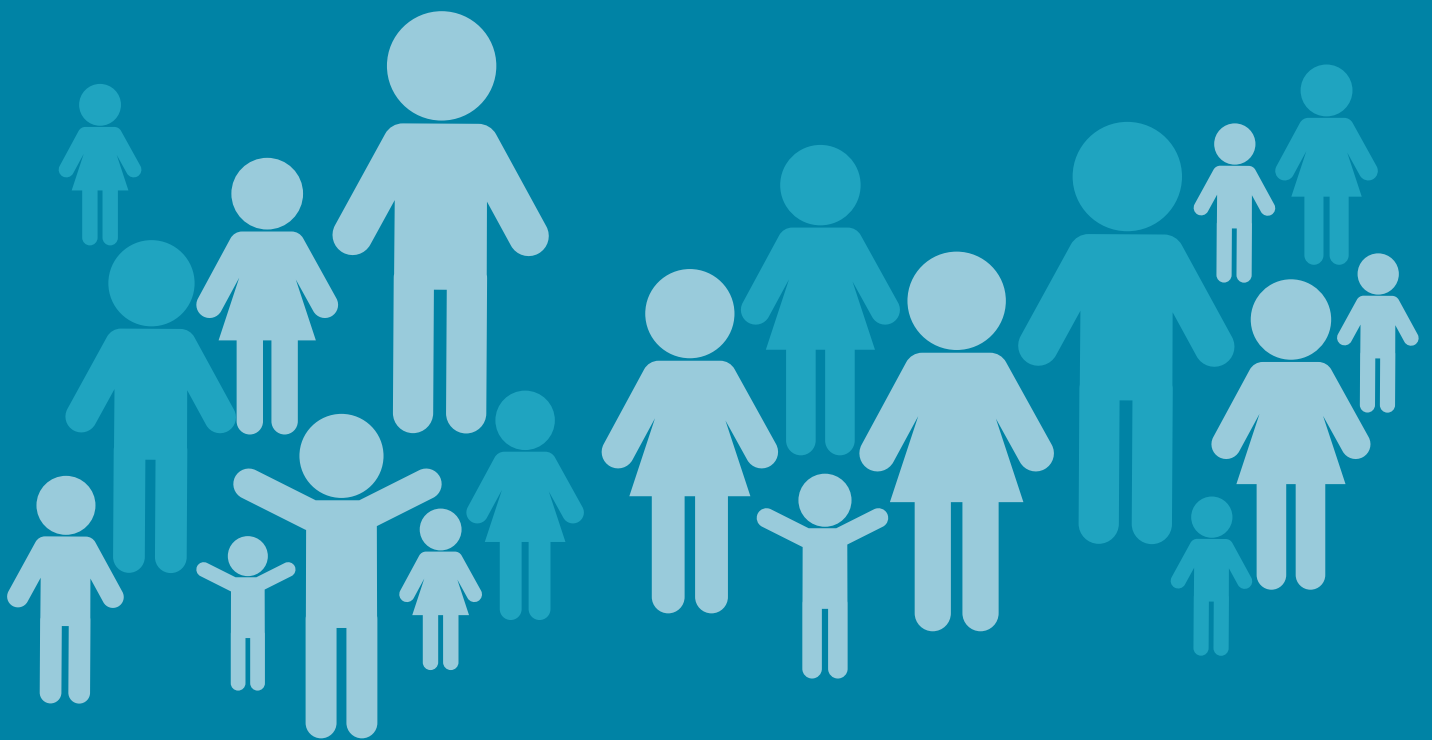


Kirklees Children and Young People Services

Non-statutory consultation:

The LA proposes to decommission specialist provision at Headlands CE (VC) JI&N School and deliver the service in a different way.

Please tell us your views on our proposals.



*The closing date for responses is
1st October 2018.*



Kirklees council wants to ensure that support is effective, flexible and meets the needs of our children and young people to enable them to succeed. Support needs to be targeted where it is most needed whilst giving us the opportunity to analyse future provision that will help deliver better outcomes.

In 2012 Kirklees Cabinet (the council's main decision making body) approved the reorganisation of specialist provision for disabled children and those with special educational needs across Kirklees. Since then specialist provision across Kirklees has been under continuous review to offer local children more choice at their local school.

The current pattern of specialist provision in Kirklees

Strand	Primary	Secondary
Hearing Impairment	Lowerhouses CE (VC) JI & EY School 10 Fixed places 4 Transitional places & Outreach	Newsome High School & Sports College 12 Fixed places 2 Transitional places & Outreach
Visual Impairment	Dalton School 10 Fixed places 4 Transitional places & Outreach	Moor End Academy 12 Fixed places 2 Transitional places & Outreach
Physical Impairment	Rawthorpe St. James (CE) VC I&N and Rawthorpe Junior School 5 Transitional places & Outreach	Newsome High School & Sports College 10 Fixed places 2 Transitional places & Outreach
Complex Communication and Interaction Needs	Windmill Church of England Primary School (Communication & Interaction) 12 transitional places & Outreach Headlands CE (VC) JI & N School (Autistic Spectrum Disorder) 6 Transitional places & Outreach Central Team Support for Outreach across Kirklees	Royds Hall Community School (SLCN) 20 Fixed places 4 Transitional places & Outreach Honley High School 15 Fixed places 5 Transitional places & Outreach Thornhill Community Academy 15 Fixed places, 5 Transitional places & Outreach



The type of places currently available

Each school provides placements as part of the school-based provision (fixed/transitional), as well as outreach support. The flexibility around the capacity for outreach work is governed by the numbers attending either fixed or transitional places. Where numbers are low, this releases capacity and maximises the outreach support available to all Kirklees schools.

- **Fixed places**

At primary phase, fixed places exist for children with complex sensory impairments where there is a requirement for long term, specialist interventions and support, which cannot be offered routinely across all mainstream settings.

- **Transitional places**

These are placements for up to a maximum of 6 terms and are for children and young people who require support over and above that provided through outreach. Any transitional placement is likely be preceded by a period of outreach involvement which has exhausted every avenue that would normally result in the child's needs being best met in their local school. Transitional placements are offered following a review of the Education Health and Care Plan.

Why are we making these proposals?

Over the last year, the Governing Body at Headlands CE (VC) JI&N School has expressed concerns about the amount of money available to maintain the provision at their school. An additional challenge for the school has been the difficulty with the recruitment of specialist teachers. The shortage in specialist staffing at the school has limited the ability to deliver outreach to other schools where there is an increased demand.

Currently this outreach is delivered by the centrally based outreach team. However given the increased demand this is not enough to meet future needs. As a key area of need identified through the Strategic High Needs Review, schools cited the need for additional outreach support to enable them to meet their responsibilities with an ever increasing number of children with Complex Communication and Interaction Needs (including ASD). Outreach is delivered by specialist provision staff and those in the centrally based team. The specialist teams work alongside staff in mainstream schools to develop their skills and knowledge, and also to support the school in developing appropriate strategies and provision for individual children. After a series of conversations between school leaders and the Local Authority LA, a decision was taken by the Governing Body to request a proposal to decommission the provision at their school.



The LA proposal is:

- to decommission 6 transitional places and outreach at Headlands CE (VC) JI&N School for children with Autistic Spectrum Disorder
- to work with the families of the remaining children to ensure that their needs can continue to be met with minimum disruption.

The capacity released through a decommission would be used to enhance the central outreach offer.

The LA would undertake an analysis of the effectiveness of the enhanced central outreach team to see if it meets the needs of children with Complex Communication and Interaction Needs within their local schools, and determine any future provision that may be required.

The objectives of the proposal are to:

- continue to ensure specialist support is available where it is needed and is able to have the biggest impact for children, young people and their families
- continue to ensure that the overall pattern of specialist resource provision in Kirklees is flexible and can support and respond to the needs of individual pupils and parental preferences

- continue to provide access to appropriately trained staff and access to specialist support and advice, so that individual pupils can have the fullest possible opportunities to make progress in their learning and participate in their school and community
- continue to support the LA's strategy for making schools and settings more accessible to disabled children and young people and the scheme for promoting equality of opportunity for people with SEND.

What happens next?

A 4 week non-statutory consultation is open between 4 September 2018 and 1 October 2018. You have until then to express your views online, in writing, or in person at the consultation event. Your opinions are important to us.

Once the consultation has finished, all feedback will be reported to Kirklees Council's Cabinet. They will then decide whether to move to the next stage. This would mean the publication of legal notices and another chance to view the proposals and comment on them before a final decision is made. The following table shows the next steps involved in the process. Dates are subject to change and would be dependent on Cabinet approval to move to each stage.

Activity	Date
Report to Cabinet to approve non-statutory consultation	10 July 2018
Consultation and engagement	September 2018
Outcome report to Cabinet and approval to next stage*	November 2018
Publication of notices and representation period*	November 2018
Decision by Cabinet (within 2 months)*	January 2019
Implementation starts*	February 2019

**Subject to scheduling of Cabinet meetings which means dates might change*



Consultation event

The following informal 'drop-in' event is open to everybody: families of pupils attending the schools, staff, governors and other members of the community and anyone who would like to hear more and discuss the proposals. Officers from the council will be present to answer questions and hear your views. Anyone is welcome to attend.

Kirklees Council wants to know what you think. Your views will be reported back to Kirklees Council Cabinet as part of the decision making process.

Date	Venue	Time
19 September 2018	Headlands CE (VC) JI&N School	2.45pm – 3.45pm

Response form

Online: You can take part in the consultation by completing the online form on our website:

www.kirklees.gov.uk/schoolorganisation

By post: FREEPOST Kirklees Council School Organisation & Planning (Postage is free; you do not need a stamp)

In person: At the consultation drop-in session or hand in at the school.

Email: Please note that you can contact us via email should you have any queries regarding these proposals. Please send your emails to school.organisation@kirklees.gov.uk

Please make sure you respond by **1 October 2018** to ensure that your views are heard.



Do you support or oppose the proposals relating to the specialist provision at Headlands CE (VC) JI&N School and delivering the service in a different way?

Please tick one of these boxes.

Strongly support	Support	Neither support nor oppose	Oppose	Strongly oppose	Don't know

Why have you decided that is your view? Please tell us about it along with anything else you would like us to consider relating to this proposal.

About you



This section asks you for some information that will help us to analyse the results of the survey and to see who has taken part. You will not be identified by any of the information that you provide.

I am a: (please tick and complete all those that apply to you)

	Parent/carer	your child's/ children's school(s):
	Pupil	your school:
	Governor	your school:
	Member of staff	your school:
	Local resident	please tell us:
	Other	please tell us:

* This information will form part of the outcome report which will be presented to Cabinet for a decision to proceed to the next stage. Please note all responses will remain anonymous.

Kirklees Children and Young People Services

